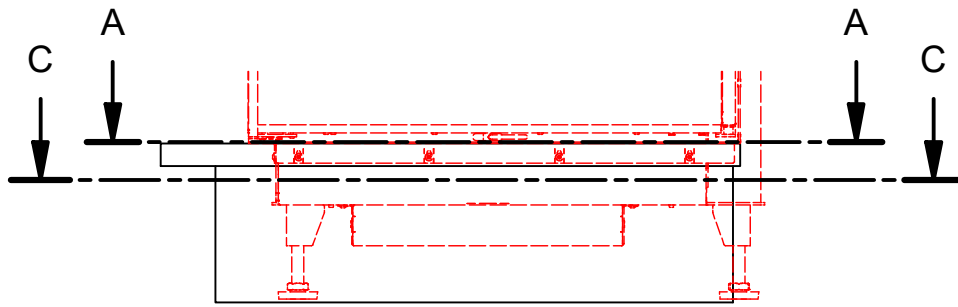
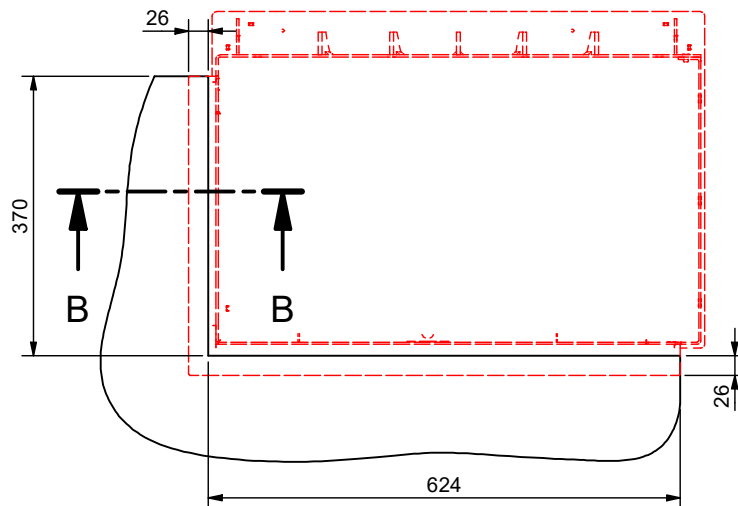


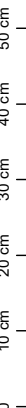
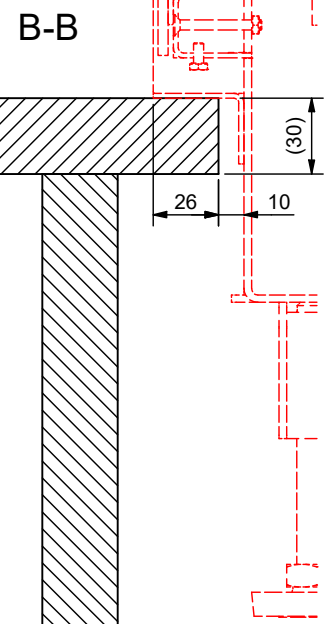
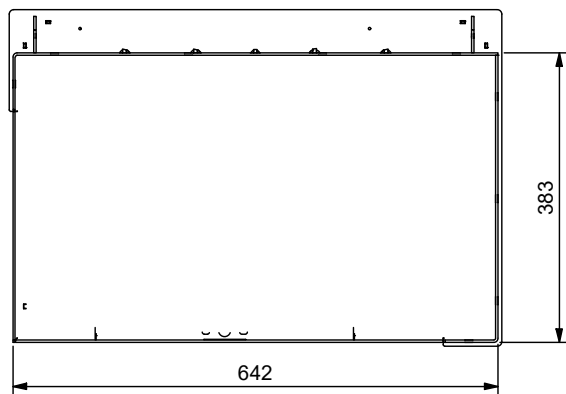
Frontbank / Socle  
Basamento frontale / Frontal bench



A-A (mit Kachelanschlagwinkel / avec équerre de butée /  
con profilo di battuta / with a stop bracket)




C-C (ohne Kachelanschlagwinkel / sans équerre de butée /  
senza profilo di battuta / without a stop bracket)



Allgemeintoleranz / Tolerance générale / Tolleranza generale / Tolerance general  $\pm 2$  mm

Detaillansichten durch Zoom-Funktion auf dem elektronischen pdf-Massblatt ersichtlich. Download unter [www.ruegg-cheminee.com](http://www.ruegg-cheminee.com).  
La vue détaillée est visible par la fonction zoom sur la fiche de mesure pdf. Download voir sous voir sous [www.ruegg-cheminee.com](http://www.ruegg-cheminee.com).  
La vista dettagliata è resa possibile tramite la funzione "Zoom" sulla scheda tecnica in pdf. Scaricabile dal sito [www.ruegg-camini.it](http://www.ruegg-camini.it).  
Detailed views of zoom function on the electronic PDF datasheet apparent. Download at [www.ruegg-cheminee.com](http://www.ruegg-cheminee.com).

Alle Masse in mm! Massänderungen vorbehalten / Dimensions en mm! Sous réserve de modifications / Tutte le misure indicate sono in mm! Con riserva di modifica / All dimensions in mm! Mass change without notice

Typ <b>KII 50x68x42 Links Gen.1</b>		Massblatt Fiche de mesure Scheda tecnica Dimensional drawing		Massstab Echelle Scala Scale
Art. Nr. <b>10.2.K506842L</b>	Status <b>Freigegeben</b>	Zeichnungs Nr. <b>2024-03177</b>		Revision <b>-</b>
		Ruegg Cheminée Schweiz AG Stubbachstrasse 7 CH-8340 Hinwil Tel. : +41 (0)44 938 58 58 <a href="http://www.ruegg-cheminee.com">www.ruegg-cheminee.com</a>		Projektionsmethode 